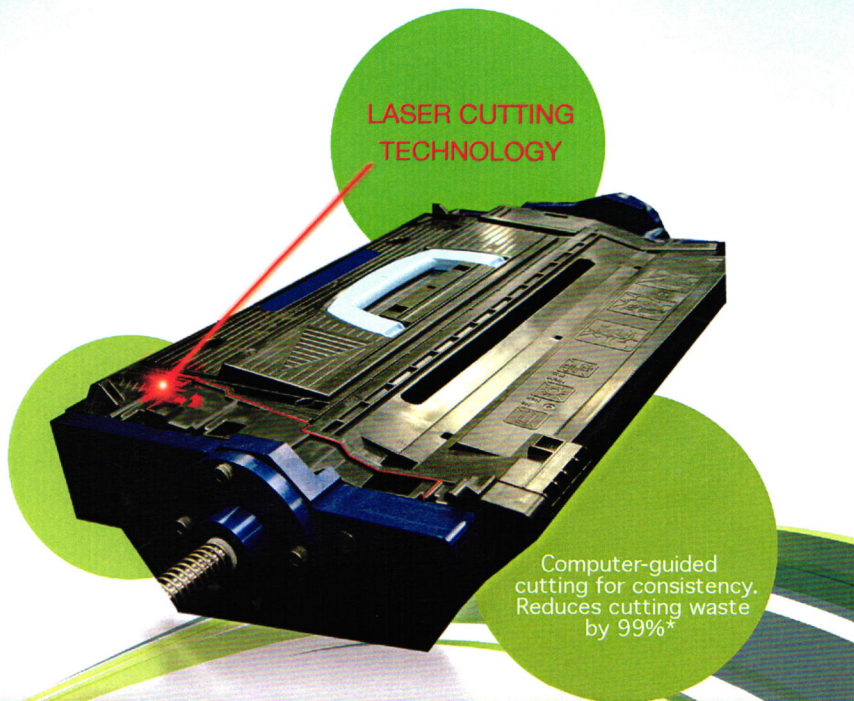




Providing quality products, quality service and value are our top priorities.

Premium toner cartridges
Experience the difference!



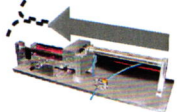
Patented & Patent-Pending Technologies



Secondary Cleaning System® (SCS)
Minimizes streaking and banding. Improves overall print quality.*



Ultrasonic Welding Technology
Eliminates leaking. Maintains original cartridge critical gap alignment.*



Cartridge Separation
Does not remove plastic or cut through realignment pins. No clips needed.*



Robotic Alignment Process
Eliminates banding. Automated high precision alignment process to help prevent toner build up.*

Award-Winning Quality

- Industries most stringent testing protocols including environmental stress, accelerated aging, and ISO 19752/19798 yield test.
- Industries most stringent 5 step QC protocol including triple QC testing and exhaustive destructive testing.
- Voted industry's Best in Quality for 7 consecutive years.



The ISO 9001 family of standards for quality management systems. Requirements in the ISO 9001 standard include: documenting procedures, monitoring processes, keeping adequate records, taking corrective action, regularly reviewing the overall system and facilitating continuous improvement.

Green Initiatives

At M&I we believe in reducing our footprint for greater environmental sustainability.

Waste Reduction Initiatives

- Used foam caps are converted into carpet padding (when possible) or used in waste-to-energy.**
- Reduced packing material volume through the use of air chamber bags.
- Recycle our cardboard, mixed paper and metals when possible.

Recycling

- Recycled over 2.4 million toner cartridges in 2013.



Tel: 1-888-434-9464 • Fax: 1-877-983-7854
www.metroimagingervices.com